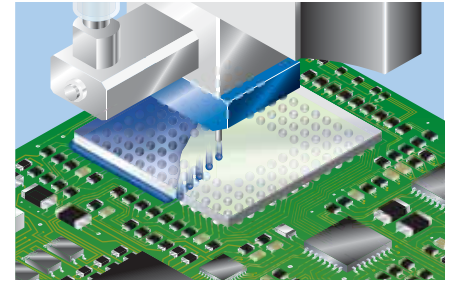


AeroJet[®]



Underfill dispensing

UPGRADED!!

Dramatically evolving into 333 shot/sec.*
Drastically reducing tact time of production



- **Super-high speed dispensing.** Find how fast it is.
- MUSASHI's own jet mechanism makes **super micro dots.**
- **Four more times durable compared with our conventional jet dispenser.**
- Achieved steady and reproducible dispensing.
- Nozzle heater controller comes as the standard.

Application

- JET-dispense Ag paste on lead frame
- JET-coat PCB to prevent moisture for automotive industry
- JET-dispense UV resin
- JET-bond various electronic parts
- Able to make any kind of dispensing. Dotting, lining, coating and more.

* option

Specification

Product name	NON-CONTACT JET DISPENSER AERO JET
Model	MJET-A

[Head]

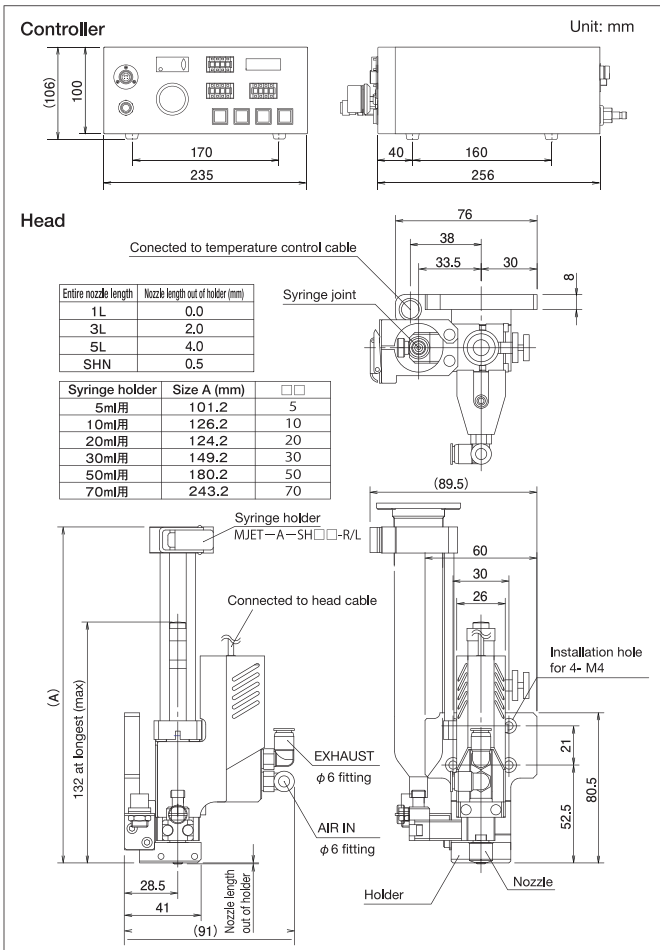
Dispense method	Jet type
Drive method	Air type
Temperature(Heater) controller	With heater controller
Connectable syringe	Various syringe sizes are applicable(5 to 70ml)
Dispensable liquid materials	Underfill materials, Ag paste, moisture proof materials and UV resin, etc.
Applicable range for liquid material viscosity	50 to 300,000mPa·s
Optional nozzles	Pipe type (1L, 3L, 5L): 15 to 32G
	All-in-one design (SHN): 28 to 36G
Air pressure supply	0.5MPa or less (syringe) 0.45 MPa or more (electromagnetic valve)
Weight (Gross weight, Net weight)	560g

* selective that depends on dispensing volume.

[Controller]

Control method	Electronic-pneumatic method	
Pressure setting	0.005 to 0.700MPa	
Control circuit of dispensing time	Digital timer circuit	
Setting at dispensing time	Dot mode	0.01 to 99.99sec.
	Line mode	Turning on time: 0.01 to 99.99sec. Turning off time: 0.01 to 99.99sec.
Dispensing frequency setting function	1 to 9999 times (At the line mode).	
I/O signal	Display part	LED digital display
	Input (4Pin connector: No point of contact or having point of contact signal) (terminal I/O: No point of contact)	Dispensing signal
		Mode switching signal
		Dispensing completion signal
	Output (noncontact output)	Dispensing signal
		Power supply ON signal
		The main mode state signal
		Submode state signal
	Air pressure supply	Max. 0.800MPa
	Power supply and power consumption	AC100 to 240V 50/60Hz/62W
Weight (Gross weight, Net weight)	4kg	

Dimensional outline drawing

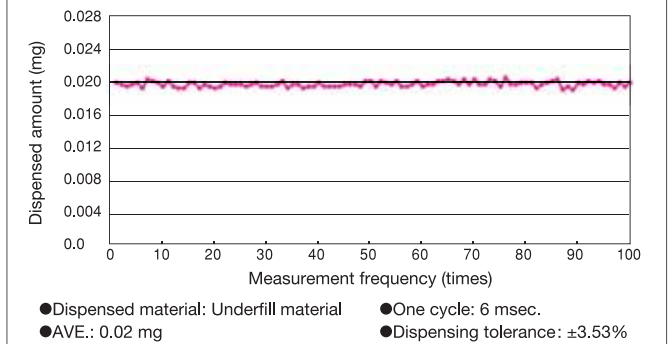


Safety precautions
Make sure to read the instruction manual before you use the unit, for your safety.

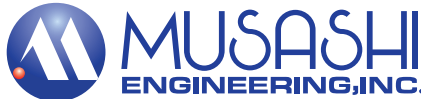
*The specifications of the system may change without notice.
*All copyrights are retained by MUSASHI ENGINEERING. Reprinting, reproducing, and/or transmitting as electronic data in whole or in part these material without prior written permission is strictly prohibited.

Dispensed amount chart

Tolerance of underfill material amount dispensed by AeroJet



Example: Equipped with FAD5100



世界のディスペンサー
武蔵エンジニアリング株式会社
MUSASHI ENGINEERING, INC.

MUSASHI ENGINEERING HONG KONG LTD. Unit 1706, 17/F., Greenfield Tower, (South) Concordia Plaza, No.1 Science Museum Road, T.S.T.East, Kowloon, H.K. TEL : (852)2620 5799 / FAX : (852)2620 5771

MUSASHI ENGINEERING SHANG HAI LTD. ROOM 120, 1F, NO.525 Xian Feng Street, MINHANG, SHANGHAI, CHINA 201103 TEL : (86)21 6446 7881 / FAX : (86)21 6446 7882

SHENZHEN BRANCH Room 4D-06 Building No 213, Tairan Industry & Trade Park, Futian District, Shenzhen City, Guangdong Province, PR China 518042 TEL : (86)755 8346 6822 / FAX : (86)755 8346 6866

BEI JING BRANCH Room 106, No.12 Tuan Jie Hu Dong Li, Tuan Jie Mansion Office Building, Chao Yang District, Bei Jing, China 100026 TEL : (86)10 8598 3317 / FAX : (86)10 8598 3327

HEAD OFFICE
8-7-4, Shimorenjaku, Mitaka-shi, Tokyo, 181-0013, Japan TEL : (81)422-76-7111 / FAX : (81)422-76-7122

BRANCH
TOKYO, OSAKA, NAGOYA, SENDAI, FUKUOKA, SAITAMA, NAGANO, EAST-KANTO, AKITA, KANAZAWA

MUSASHI ENGINEERING KOREA, LTD. Rm 906-1, A-dong, Bundang Techno-Park, 150 Yatap-dong, Bundang-gu, Seongnam-si, Gyeonggi-do 463-816, Korea TEL : (82)31-702-3811 / FAX : (82)31-702-3881

TAIWAN BRANCH 8F-2, No. 158, Sec. 2, Gongdao 5th Road, Hsinchu, Taiwan 30070 TEL : (886)3-572-9200 / FAX : (886)3-572-9300

SINGAPORE BRANCH 20 Bendemeer Road, #06-13 CyberHub Singapore 339914 TEL : (65)6258-2422 / FAX : (65)6258-4844

MUSASHI ENGINEERING (THAILAND) CO., LTD. No.12 Soi Bangna-Trad 25, Bangna, Bangkok 10260 Thailand TEL : (66)2-769-5708 / FAX : (66)2-769-5450

MUSASHI ENGINEERING EUROPE GMBH Leopoldstrasse 244, 1.Stock 80807 Munich Germany TEL : (49)89 208039 470 / FAX : (49)89 208039 478

