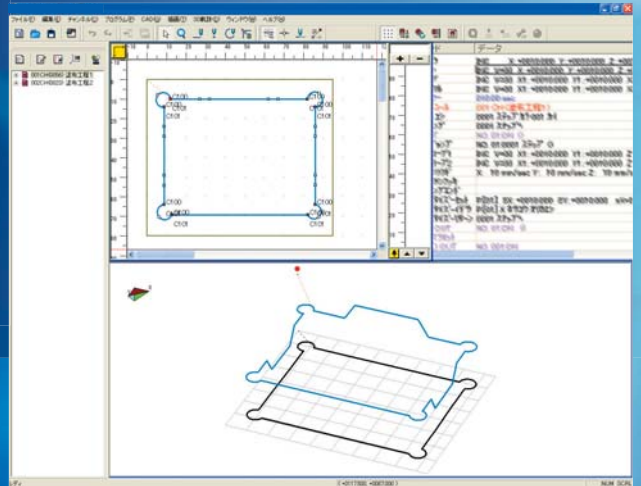


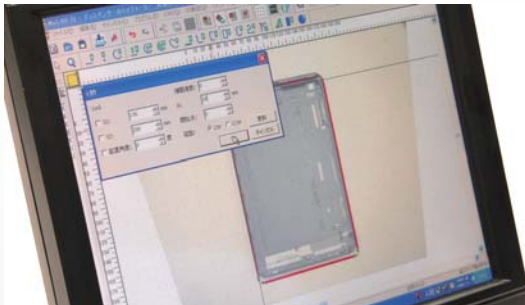
**NEW**

# Concentration of **No.1** dispensing know-how



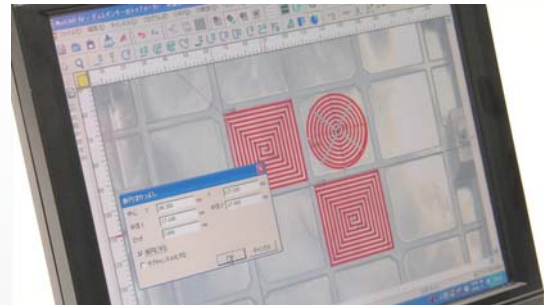
- Less edit time
- Intuitive drawing of program
- Easy editing for beginners

## Rectangular pattern input



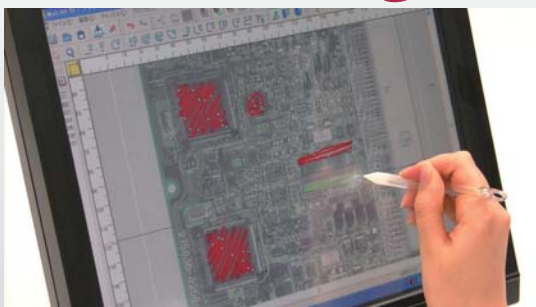
A dispense pattern can be entered into a captured work photo.

## Plane dispense pattern input



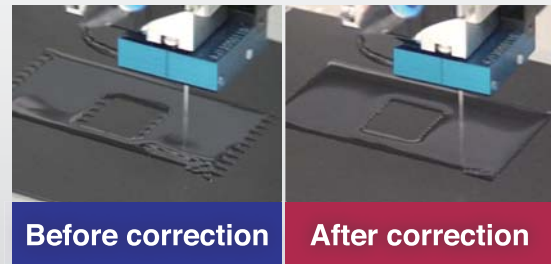
A plane dispense pattern can be also automatically created just by clicking.

## Handwriting input, *Mu-Sketch*



A program can be created with the feeling of a sketch on the touch panel.

## Deviation correction



Before correction

After correction

A coating edge can be evened just by clicking.



Demonstration in action! Please try our neo-sensory dispensing pattern edit.

## 3 major functions

- Pattern generator** automatically forms chip pattern on wafer
- Masking mode** automatically excludes dispensing prohibited areas
- Replication/rotation/inversion function** forms staggered arrangement and performs multiple workpieces automatically

## 4 new operations

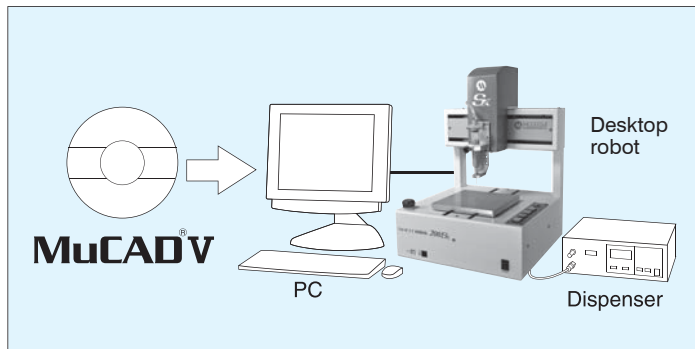
- Object editing** function with a simple and useful right-click
- Thread cut editing** function eliminating puddles at dispensing start and stop points
- Addition of frequently used functions on the **toolbar**
- Windows 7 compatible (Japanese/English/Chinese)



## System requirements


OS	Windows®7, Windows®Vista, Windows®XP, Windows2000
CPU	Pentium®4 2GHz equivalent or higher
MEMORY	512MB or higher (1GB or higher recommended)
DISPLAY	XGA (1024x768) or higher resolution
Hard disk	Free space of 10MB or more
USB port	Required for communication with Sx series
Serial port	Required for communication with Ω / DS series and MINI100S-3A-01(USB serial converter acceptable)
Applicable robot	Sx series / Ω series / DS series / MINI100S-3A-01

## System configuration example



\* This software is protected by the Copyright Law, and it is prohibited to reproduce or modify the software without the permission of Musashi Engineering, Inc.

\* Windows is a registered trademark of Microsoft Corporation in the USA and other countries.

 Safety precaution  
Make sure to read the instruction manual before you use the unit, for your safety.

\* The specifications of the system may change without notice.  
\* All copyrights are retained by MUSASHI ENGINEERING. Reprinting, reproducing, and/or transmitting as electronic data in whole or in part these material without prior written permission is strictly prohibited.

MUSASHI ENGINEERING, INC. is certified and registered according to ISO14001 ENVIRONMENTAL MANAGEMENT.



<http://www.musashi-engineering.co.jp/english/>

**World Leading Dispenser**  
**MUSASHI ENGINEERING, INC.**

**HEAD OFFICE**  
8-7-4, Shimorenjaku, Mitaka, Tokyo, 181-0013, Japan TEL : (81)422-76-7111 / FAX : (81)422-76-7122  
**BRANCH**  
TOKYO, OSAKA, NAGOYA, SENDAI, FUKUOKA, SAITAMA, NAGANO, EAST-KANTO, AKITA

**SINGAPORE BRANCH** 20 Bendemeer Road, #06-13 CyberHub Singapore 339914  
TEL : (65)6258-2422 / FAX : (65)6258-4844  
**MUSASHI ENGINEERING (THAILAND) CO., LTD.** No.12 Soi Bangna-Trad 25, Bangna, Bangna, Bangkok 10260 Thailand  
TEL : (66)2-769-5708 / FAX : (66)2-769-5450  
**INDONESIA BRANCH** Jl. MH. Thamrin, Robson Square, Block A-15, Lippo Cikarang, Bekasi 17550, Jawa Barat, Indonesia  
TEL : (62)21 8990 5005/ FAX : (62)21 8990 5004  
**MUSASHI ENGINEERING EUROPE GMBH** Leopoldstrasse 244, 1.Stock 80807 Munich Germany  
TEL : (49)89 208039 470 / FAX : (49)89 208039 478  
**MUSASHI ENGINEERING KOREA., LTD.** 902 No. 9 F. #C, Korea Bio Park. 694-1 Sampyeong-dong, Bundang-gu, Seongnam-si, Gyeonggi-do 463-400 , Korea  
TEL : (82)31-702-3811 / FAX : (82)31-702-3881  
**TAIWAN BRANCH** 8F-2, No. 158, Sec. 2, Gongdao 5th Road, Hsinchu, Taiwan 30070  
TEL : (886)3-572-9200 / FAX : (886)3-572-9300

**MUSASHI ENGINEERING HONG KONG LTD.** Unit 1706, 17/F., Greenfield Tower,(South)Concordia Plaza, No.1 Science Museum Road, T.S.T.East, Kowloon, H.K.  
TEL : (852)2620 5799 / FAX : (852)2620 5771  
**MUSASHI ENGINEERING SHANG HAI LTD.** ROOM 120, 1F, NO.525 Xian Feng Street, MINHANG, SHANGHAI, CHINA 201103  
TEL : (86)21 6446 7881 / FAX : (86)21 6446 7882  
**SHENZHEN BRANCH** Room302 3rd Floor Unit4, Building 2, Tian'an Cyberpark, Futian District, Shenzhen City, Guangdong Province, PR China 518042  
TEL : (86)755 8346 6822 / FAX : (86)755 8346 6866  
**BEI JING BRANCH** Room 106, No.12 Tuan Jie Hu Dong Li, Tuan Jie Mansion Office Building, Chao Yang District, Bei Jing, China 100026  
TEL : (86)10 8598 3317 / FAX : (86)10 8598 3327