

# KOENIG & BAUER

## alphaJET 5 X

Industrie		
Entry	Advanced	High-End

Easiest usability

Lowest running costs

Lowest maintenance effort



we're on it.

## Table of contents

Continuous Inkjet coding	2
Recommendation for use of CIJ systems	2
Application examples	3
Technical data alphaJET 5 X	4
Quality	5
Contact	5

# KOENIG & BAUER

## Continuous Inkjet coding

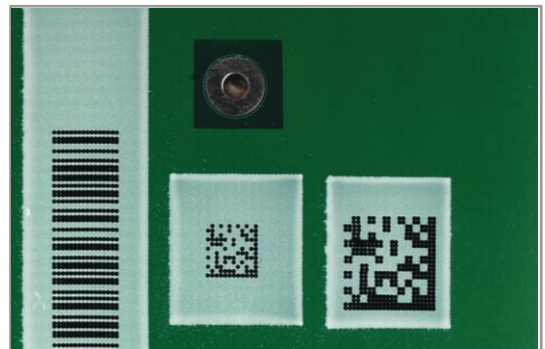
The quality of industrial coding with inkjet coding systems depends on the nature of the material (colour / coating / quality) and the ink used (pigmented / dye-containing).

## Recommendation for use of CIJ systems

<b>Material group</b>	<b>Material</b>	<b>Tinte</b>
<b>Foil</b>	Foil	1039.6926
<b>Wood</b>	Wood	1006.8226
<b>Ceramic</b>	Ceramic	1006.8226
<b>Plastics</b>	Polypropylene (PP)	1040.3100
	Low density polyethylene (LDPE)	1040.3587
	Polyamide (PA)	1006.8234
	Acrylnitril-Butadien-Styrol (ABS)	1040.0483
	Polyethylene (PET)	1039.6926
	Polyvinyl chloride (PVC)	1006.8256
	Silicone containing plastics	1040.3228
	etc.	
<b>Metal</b>	Coated metals	1039.5171
	Metals	1040.4504
<b>Paper</b>	Paper (folded box)	1006.8250
<b>Textile</b>	Textilian	1006.8226
<b>Cabel</b>	Cable	1038.8341
<b>Tubes</b>	Tubes	1040.3100

# KOENIG & BAUER

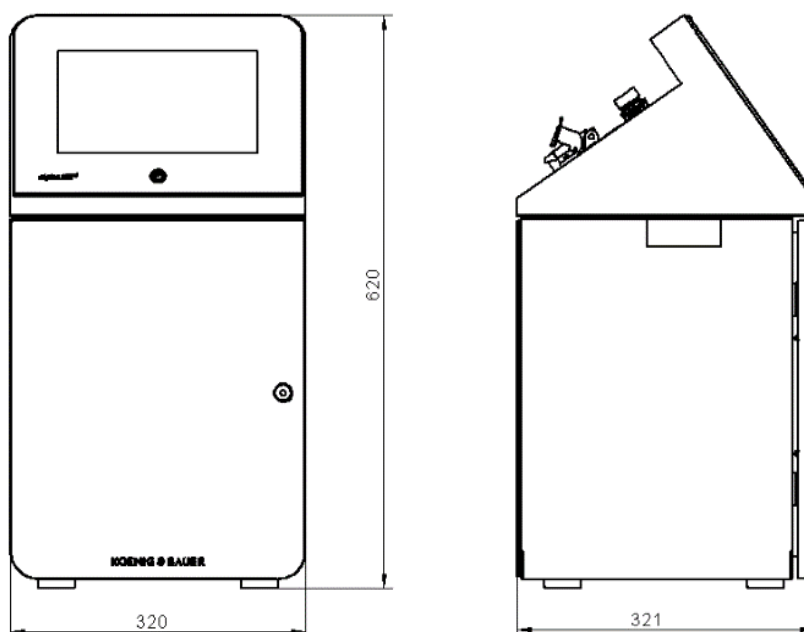
## Application examples



# KOENIG & BAUER

## Technical data alphaJET 5 X

<b>Model</b>	<b>alphaJET 5 X</b>
<b>Nozzle sizes</b>	62 µm
<b>Print height max. (dots)</b>	32
<b>Ink Variety</b>	Standard, High-Contrast, Special
<b>Head cable length</b>	4m / 6m (optional)
<b>Dimensions printer (HxWxD)</b>	620 x 320 x 321 mm
<b>Dimensions head (HxWxD)</b>	190 x 47 x 40 mm
<b>Housing weight</b>	23 kg
<b>Print speed max.</b>	Up to 800 m/min
<b>Print speed</b>	Up to 400 m/min with 2,5mm character width (depending on size, content and material this may vary speed of coding)
<b>Interfaces</b>	Ethernet, RS232, USB, alarm relay (potential free), digital I/O Port (8 inputs / 4 outputs), 2x product sensor/Encoder, Remote connection, optional signal pole
<b>Solvent recovery</b>	RE-SOLVE Ultra
<b>Protection class</b>	IP 65
<b>Connection values</b>	110 - 230 V, ± 10 %; 1-0,5 A
<b>Temperature range</b>	+ 5° to + 45° C; relative humidity max. 90%, non-condensing
<b>Operation</b>	10,4" touch screen glove operable; code-M software
<b>Interfaces</b>	Ethernet TCP/IP, RS 232, I/O
<b>Software</b>	simple text creation, automatic time and date functions, counter (freely configurable with auto-stop function), text list processing, shift marking, barcodes, data matrix codes, QR code, dot code, logos, true type fonts, Unicode, international character sets, automatic diagnosis as plain text with categorization, print preview WYSIWYG display, consumable status



# KOENIG & BAUER

## Quality

IS certification according to DIN EN ISO 9001-2015

Made in Germany.

Our quality standards include the process of continuous improvement. Design and technical changes are therefore subject to change without prior notice.

## Contact

Koenig & Bauer Coding GmbH

Benzstraße 11

97209 Veitshöchheim, Germany