



Fisher Scientific™ 850 Homogenizer

Hand Held Homogenizer and Generator Probes

850 Homogenizer

The 850 Homogenizer is an affordable, high performance instrument capable of processing virtually any laboratory sample in seconds. A powerful 850 watt motor provides maximum versatility for homogenizing, dispersing or emulsifying the largest variety of samples types and sizes in its class.

The 850 Homogenizer features an advanced, integrated, push button digital control system that ensures accuracy and repeatability. The unit's closed loop variable speed controller (5,000 - 25,000 rpm) maintains selected speeds within +/- 100 rpm of the original set point. The digital timer can be set from seconds to minutes, and includes a 30 second count-down timer, which is ideal for remote applications in fume hoods or biosafety cabinets. A soft start feature ensures smooth processing and minimizes splashing.

The 850 Homogenizer is compatible with a wide range of interchangeable stainless steel rotor stator generator probes (sold separately), from 5 mm to 30 mm diameter, and processes samples ranging from <200 µL to 5 liters. Stainless steel probes are constructed of quality materials for durability, and are easy to disassemble for cleaning. Plastic generator probes are available to completely eliminate the risk of carryover and cross contamination between samples. (adapter required).

Processing Range:

200 µL to 5 L

Speed: Variable from

5,000 to 25,000 rpm

Power Rating:

850 watt max

Compliance:

CE approved

Timer:

1 sec to 9:59

Warranty:

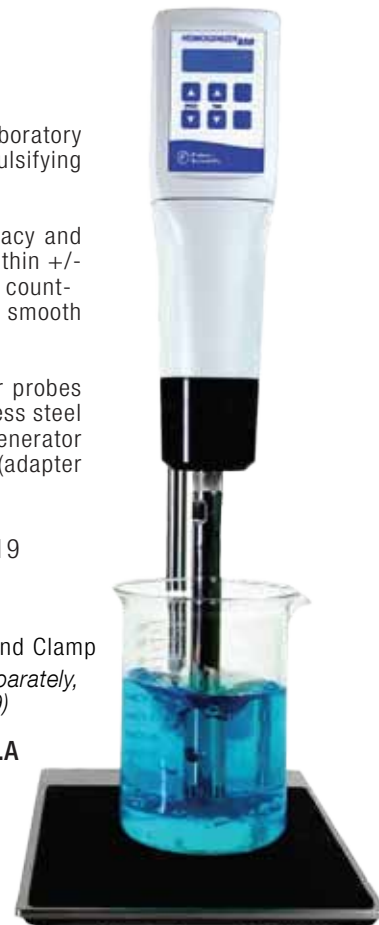
2 years warranty

Cat. No. 15505819

Includes

- 850 Watt Motor
- Cross rod and Stand Clamp (lab stand sold separately, cat. no. 15535819)

MADE IN THE U.S.A.



Plastic Probes



SIZE	QUANTITY	CAT. NO.	
7 mm x 110 mm	25 Pack	15575819	
7 mm x 110 mm	50 Pack	15585819	
Adapter	1	15555809	(required for plastic probes)

Stainless Steel Probes



SIZE	PROCESSING RANGE	TYPE	RESULTING PARTICLE SIZE	CAT. NO.
5 mm x 75 mm	0.20 mL - 5 mL	Flat Bottom	Fine	15545819
7 mm x 115 mm	0.25 mL - 30 mL	Saw Tooth	Fine	15555819
		Saw Tooth - Wide Window	Course	15565819
10 mm x 115 mm	1.5 mL - 100 mL	Saw Tooth	Fine	15595819
		Saw Tooth - Wide Window	Course	15505819
20 mm x 195 mm	100 mL - 2 L	Saw Tooth	Fine	15515829
		Saw Tooth - Wide Window	Course	15525829
30 mm x 195 mm	200 mL - 5L	Saw Tooth	Fine	15535829
		Flat bottom - Wide Window	Course	15545829

850 Package

The Fisher Scientific 850 Homogenizer package includes: 850 watt motor, 10 mm x 115 mm Saw Tooth Stainless Steel Generator Probe, 20 mm x 195 mm Saw Tooth Stainless Steel Generator Probe, 30 mm x 195 mm Flat Bottom Stainless Steel Generator Probe, tool kit, instruction manual, cross rod, and motor stand assembly.

Cat. No. 15515819



For more information, contact Fisher Scientific Malaysia



Malaysia:
 For customer service, call + 603 5122 8888
 Email, enquiry.my@thermofisher.com
 fishersci.com.my | myfisherstore.com/malaysia

