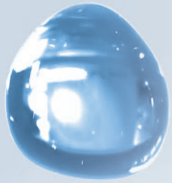


Refractometer ATR-B TOUCH



Laboratory Refractometer ATR-B TOUCH

- High-performance robust Refractometer for the determination of mixing ratios (mass percent)
- Quality and quantity control of liquids
- Highly accurate and reproducible measuring results in no time at all
- Continuous measuring mode
- Flat, easy to clean and easy to handle sample chamber
- Fast and reliable control of sample temperature by built-in solid state Peltier-thermostat
- Electronic unit separated from measuring head
- Operating mode alternatively in horizontal or vertical position
- Measuring head can be connected to the PC and operated as stand-alone device
- Flow-through sample compartment for continuous measurements
- Adopted user friendly Operation System displayed by a high resolution 7" TFT Touchscreen
- Easy to calibrate with sucrose solutions or certified Chemical Reference Materials (CRM)
- Modern and robust design for rough environments
- Internal measuring data storage
- Documentation according to GLP/GMP, 21 CFR part 11 ready, software optionally available
- Energy saving LED light source
- Extremely low noise
- Minimal maintenance effort
- Remote diagnostics and maintenance of data



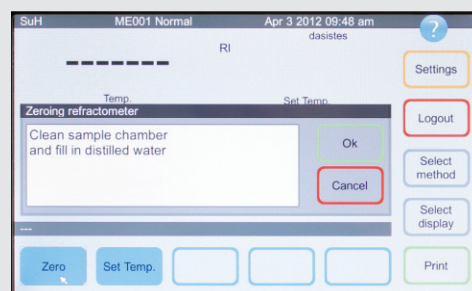
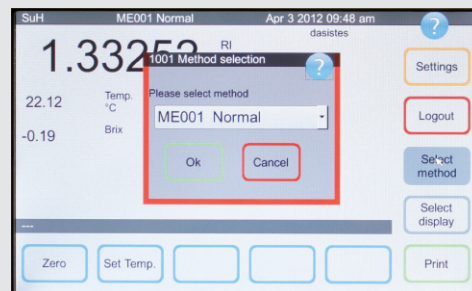
**SCHMIDT
HAENSCH**
innovators by tradition since 1864

Specifications		Refractometer ATR-B
Measuring scale:	Refractive Index (RI) Sucrose (%Brix) 10 standard scales included, (Inverted Sugar (%), Fructose (%), Glucose (%), Honey (% water), Phenol (%), Acetic Acid (%), Oechsle (°Oe), Propylene Glycol (%), Zeiss, H ₂ O ₂ (%) Up to 1000 scales freely definable	
Measuring range:	1.29000 - 1.58000 RI 0 - 100 % Brix	
Resolution:	0.00002 RI 0.02 % Brix	
Precision:	± 0.00004 RI * ± 0.04 % Brix *	
Reproducibility:	± 0.00002 RI ± 0.02 % Brix	
Sample temperature:	+ 5°C to +50°C	
Ambient temperature:	+10°C to +40°C	
Temperature measurement:	NTC sensor for measurement of sample temperature placed inside the prism	
Technical data Peltier-thermostat:	Temperature control prism / sample by build-in solid state Peltier-thermostat	
Temperature range:	20°C / 25°C	
Resolution:	0.01°C	
Precision:	± 0.03°C	
Reproducibility:	± 0.02°C	
Measurement mode:	Single or flow through measurement	
Prism:	YAG	
Light source:	LED, interference filter 589 nm	
Display:	7" TFT touchscreen, 800 x 480 Pixel, 16 Bit colours	
Operation:	Touchscreen, keyboard**, mouse**, barcode-reader**, remote via PC**	
Interface/Communication:	RS232 (1x), USB A (4x), USB B (1x), Ethernet (1x), W-LAN/LAN**	
Standard model:	Refractometer ATR-B	
Conformity:	Intern. Pharmacopoea, ASTM, AOAC, DIN, FDA, ICUMSA and others	

* Standard condition (20°C)
** Optional

Software features at a glance

- Menu guided operation system
- Personalizing of the display and data output
- Quick set-up of user-specific measurement scales
- Storage for more than 1.000 products including up to 1.000 methods
- Context interactive help function (Help button)
- Password protected administration and user profiles
- User editable formulas to evaluate and calculate the displayed values and data
- Software guided instrument calibration with sucrose solution or certified Chemical Reference Materials (CRM)
- Traceability of all calibration procedures
- Export interface to MS Excel, to Text file and PDF file
- Easy integration into other external LIMS systems
- Quick reset to factory defaults
- Quick reset to user-, company specific defaults
- User friendly self-diagnostics options and easy service and support references
- Remote diagnostics and servicing capabilities



SCHMIDT+HAENSCH GmbH & Co.

Waldstraße 80/81 | D-13403 Berlin | Germany
Phone: +49 30 / 41 70 72-0 | Fax: +49 30 / 41 70 72-99
www.schmidt-haensch.com | sales@schmidt-haensch.de



**SCHMIDT
HAENSCH**
innovators by tradition since 1864



ISO 9001:2008

