



*Delta Series B workstation with LF500A Yb: fiber laser welder*

# Delta Series

## Laser Processing Workstations

The Delta Series laser processing workstations provide a flexible, low cost, CDRH Class I environment for precision marking, welding and cutting of medical, automotive, electronic, and aerospace components, as well as a broad range of other industrial applications.

Available in 4 standard sizes, Delta Series workstations are available with your choice of precision, multi-axis (XYZ) CNC motion stages, control hardware, optional rotary, and Windows® software, with industry-standard G & M code programming features. A small foot-print design fits lean manufacturing requirements.

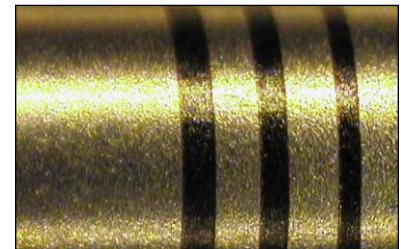
### KEY FEATURES

- Heavy duty chassis
- CDRH Class I compliant
- Large laser safe viewing window
- Interior lighting for general part and tooling illumination
- Modular control panel with pullout electronics drawer for easy access
- Stable, ergonomic platform
- Easily customizable to meet specific part and customer requirements
- Optional vibration isolation casters
- Optional rotary stage

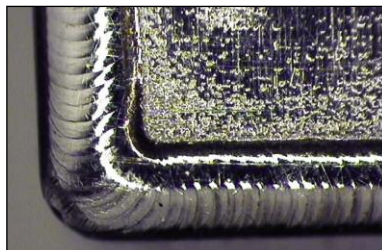
### TYPICAL APPLICATIONS



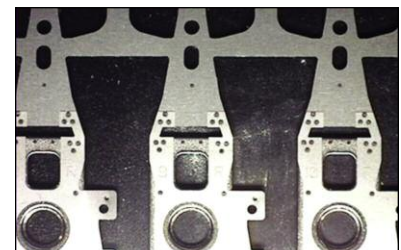
*Laser welding electronic device mounting plates*



*Laser marking corrosion resistant bands on medical tubing*



*Laser seam welding electronic and RF packages*



*Laser spot welding disk drive armatures*



**Delta Series workstation with LW70A Nd:YAG laser welder**

**OPTIONAL ACCESSORIES**

- On axis CCTV camera view with cross hair generator
- Cover gas module including nozzle and solenoid valve to minimize usage of gas
- Pneumatic vertical front access door
- Intuitive control panels and pendants for operator usage
- Customer specific tooling and part holding fixtures
- Ergonomic mounting arm for LCD screen monitor, keyboard, and mouse
- Integration with customer supplied tooling
- Customized GUI
- Barcode Scanner (handheld or fixed mount) for job load
- Automated power/energy with modulo-N control
- Vision systems for seam location, part identification, and weld path orientation

**FACILITY REQUIREMENTS**

<b>AC power requirements<sup>1,2</sup></b>	Single phase, 120 VAC ±10%, 50/60 Hz, 10 A
<b>Other facility requirements</b>	80 - 100 psi (0.55 - 0.7 MPa) filtered air supply line (pneumatic door option) 60 - 100 psi (0.4 - 0.7 MPa) industrial grade Argon (cover gas option) Note: allow 12 in (300 mm) clearance behind enclosure

<sup>1</sup> Available option: 240 VAC ±10%, 50/60 Hz, 5 A

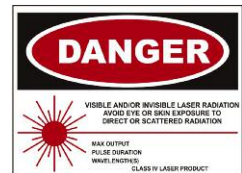
<sup>2</sup> Workstation only: laser power requirements depend on laser model selected.

**WEIGHT & DIMENSIONS**

	<b>A</b>	<b>B</b>	<b>C</b>	<b>D</b>
<b>Dimensions (W x D x H)</b>	34 in x 26 in x 74.5 in (864 mm x 660 mm x 1892 mm)	40 in x 26 in x 74.5 in (1016 mm x 660 mm x 1892 mm)	53 in x 53 in x 81.4 in (1346 mm x 1346 mm x 2068 mm)	53 in x 36 in x 81.4 in (1346 mm x 914 mm x 2068 mm)
<b>Maximum XYZ linear stage travel<sup>3</sup></b>	6 in x 6 in x 6 in (152 mm x 152 mm x 152 mm)	8 in x 8 in x 6 in 203 mm x 203 mm x 152 mm	12 in x 16 in x 8 in (305 mm x 406 mm x 203 mm)	12 in x 12 in x 8 in (305 mm x 305 mm x 203 mm)

<sup>3</sup> Maximum travel may vary; dependant on optics, tooling and all part dimensions. Customized motion configurations with a larger motion envelope available. Please consult factory with specific motion requirements.

CE certification upon request



**AMADA MIYACHI AMERICA, INC.**

1820 S. Myrtle Ave. • Monrovia, CA 91016 US  
T: (626) 303-5676 • F: (626) 358-8048  
info@amadamiyachi.com • www.amadamiyachi.com  
ISO 9001 Certified Company • 24/7 Repair Service: 1-866-751-7378

**AMERICAS**

**AMADA MIYACHI AMERICA (Midwest Office)**  
Detroit, Michigan  
T: (248) 313-3078  
midwestsales@amadamiyachi.com

**AMADA MIYACHI DO BRASIL LTDA.**  
São Paulo, Brasil  
T: +55-11-4193-3607  
antonio.ruiz@amadamiyachi.com

**EUROPE**

**AMADA MIYACHI EUROPE GmbH**  
Munich, Germany  
T: +49-89-839403-0  
infode@amadamiyachi.eu

**ASIA**

**AMADA MIYACHI CO., LTD.**  
Isehara, Japan  
T: +81-4-7125-6177  
sales@miyachi.com

**AMADA MIYACHI KOREA CO., LTD.**  
Seoul, Korea  
T: +82-31-8015-6810  
dykim@mkc.miyachi.com

**AMADA (THAILAND) CO., LTD.**  
Bangkok, Thailand  
T: +66-2170-5900  
info@mtl.miyachi.com

**AMADA MIYACHI INDIA PVT., LTD.**  
Bangalore, India  
T: +91-80-4092-1749  
info@miyachiindia.com

**AMADA MIYACHI AMERICA (Mexico Office)**  
El Paso, Texas  
T: (915) 881-8765  
mxsales@amadamiyachi.com

**AMADA MIYACHI SHANGHAI CO., LTD.**  
Shanghai, China  
T: +86-21-6448-6000  
jwu@msc.miyachi.com

**AMADA MIYACHI TAIWAN CO., LTD.**  
Taipei, Taiwan  
T: +886-2-2585-0161

**AMADA VIETNAM CO., LTD.**  
Ha Noi, Vietnam  
T: +84-4-6261-4583

Specifications subject to change without notice. Copyright© 2018 AMADA MIYACHI AMERICA, INC. The material contained herein cannot be reproduced or used in any other way without the express written permission of AMADA MIYACHI AMERICA, INC. All rights reserved.

